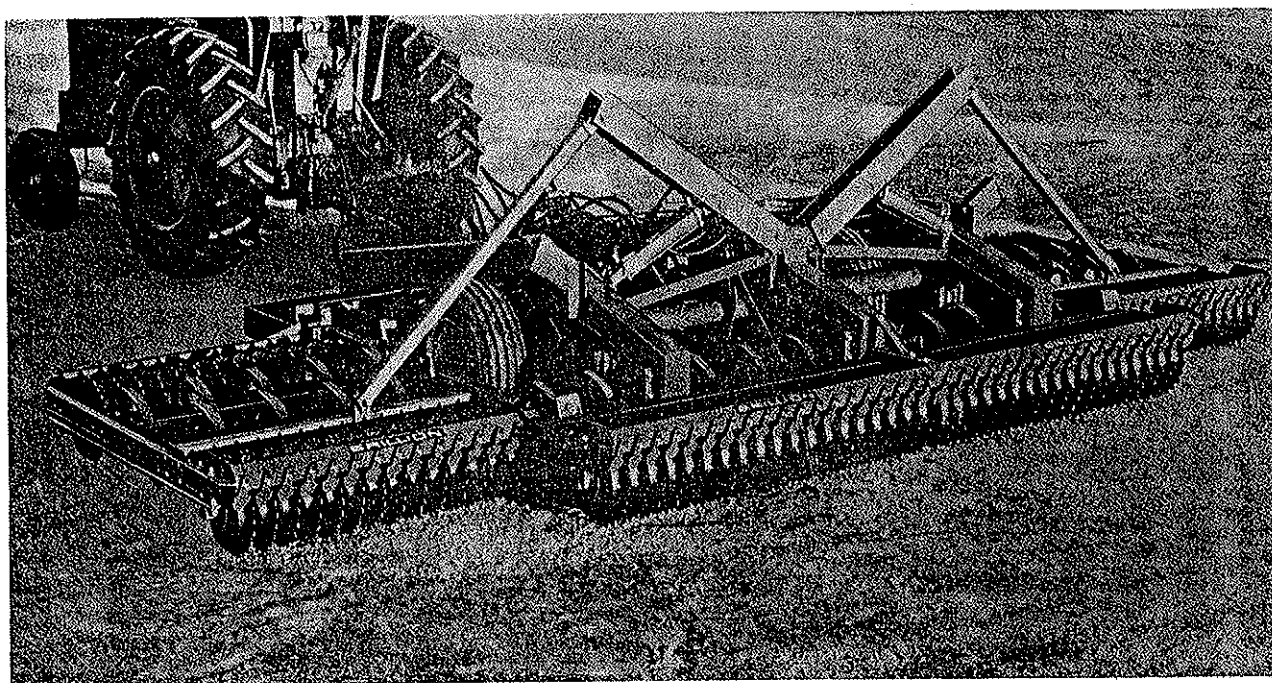


REPAIR PARTS CATALOG



WM-260 WING PULVI-MULCHER
WM-300 WING PULVI-MULCHER



MODEL WM-2602	MODEL WM-3002
MODEL WMC-2602	MODEL WMC-3002
MODEL WMCC-2602	MODEL WMCC-3002
MODEL WMCR-2602	MODEL WMCR-3002

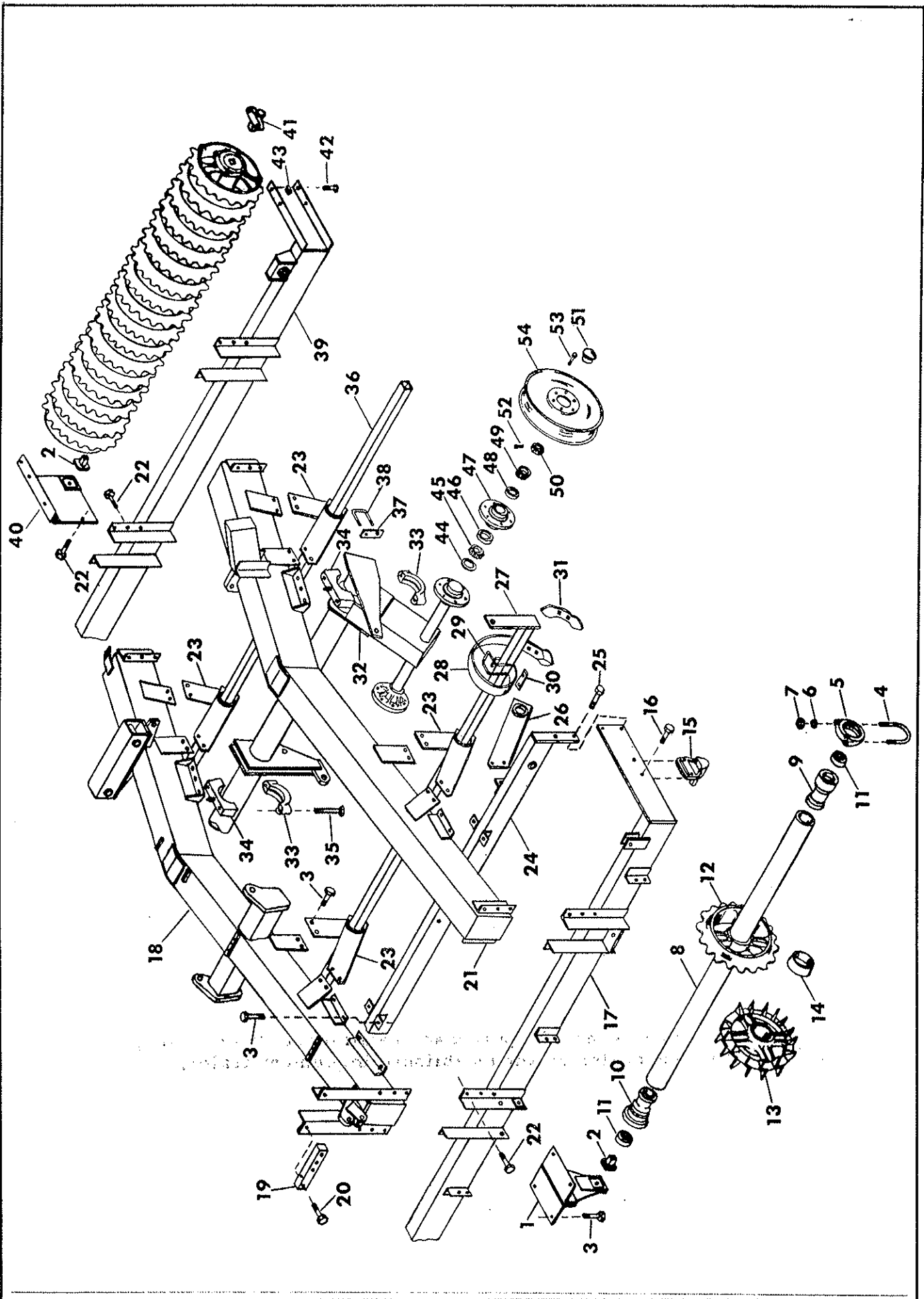
IMPORTANT! Repairs cannot be purchased retail direct from factory. Order through your Brillion dealer or any established implement dealer.

MODEL NO.

DATE PURCHASED



BRILLION IRON WORKS
BRILLION, WISCONSIN 54110



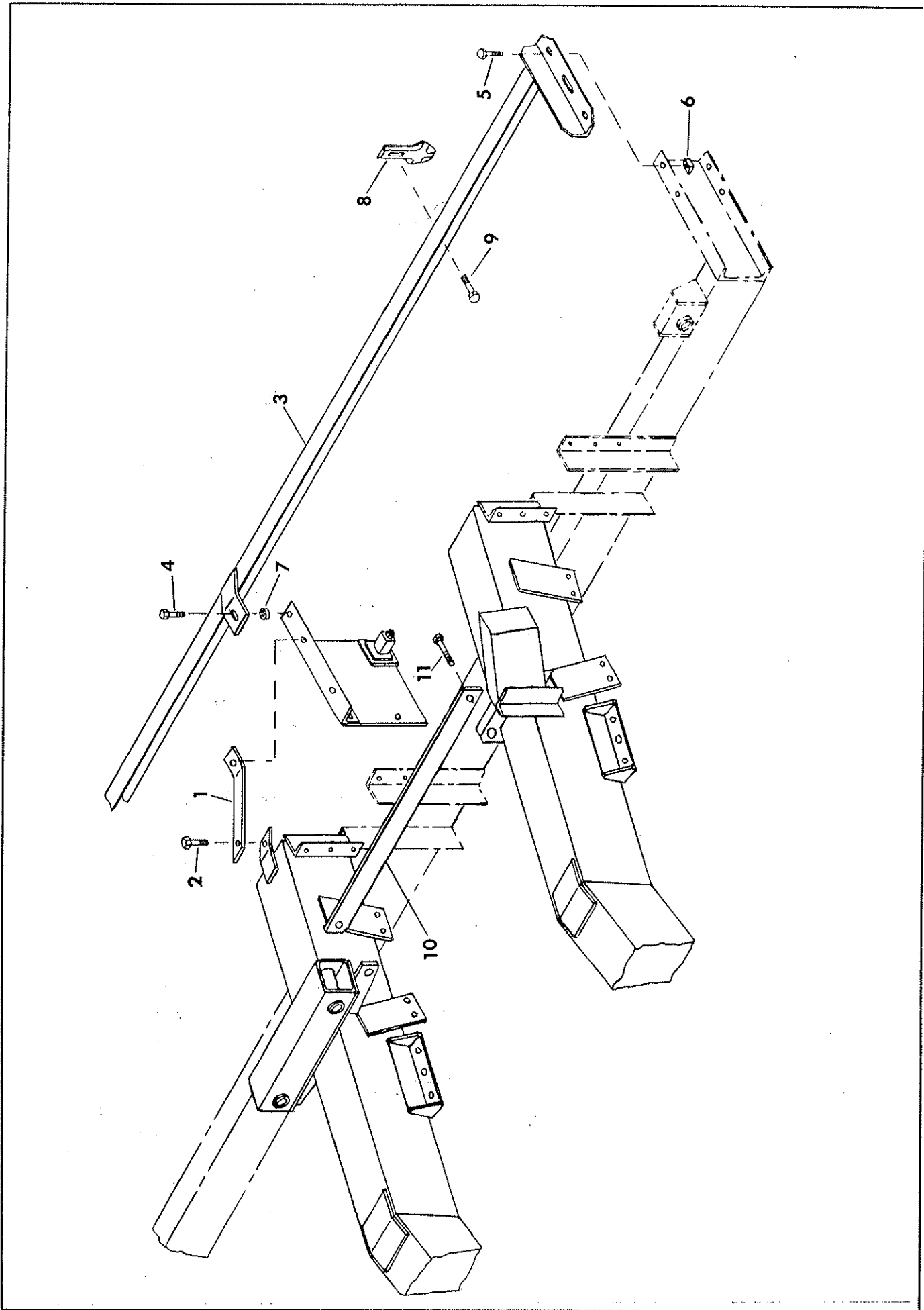
WM-260 & WM-300 CENTER SECTION

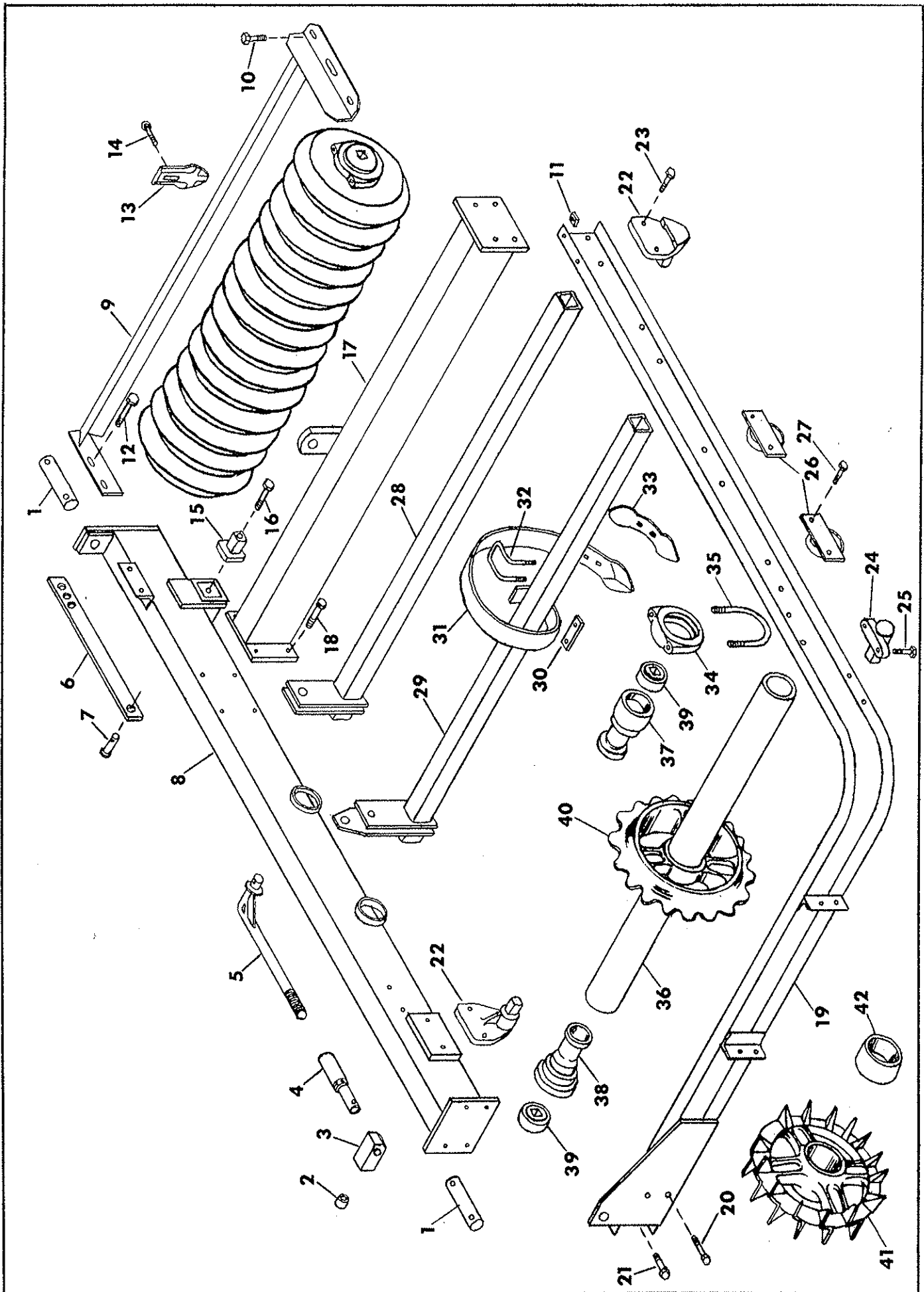
Index No.	Part No.	Description	No. Used	Weight
	9D-867	Front Center Bracket Assembly		
1	9D-586	Front Center Bracket	1	24.7
2	9D-669	Straight Axle Mount	4	.9
	9D-866	Drilled Bolt, 5/8-11 NC x 6" Long, Grade 5	2	
	1B-166	Lockwasher, 5/8" Med.	2	
	4D-529	Slotted Nut, 5/8-11 NC	2	
	2C-864	Cotter Pin, 1/8 x 1" Long	2	
3	8C-527	Capscrew, 1/2-13 NC x 1-1/2" Long, Grade 5	42	
4	9D-673	U-Bolt, 1/2" Dia.	4	1.0
5	9C-31	Axle Clamp	4	3.7
6	1C-109	Lockwasher, 1/2" Med.	62	
7	1C-390	Hex Nut, 1/2-13 NC	62	
8	1J-179	Pipe Axle Assembly - 72-5/16 - Includes Bearings	3	69.0
	1J-180	Pipe Axle Assembly - 76-6/16 - Includes Bearings	1	72.0
9	9C-14	Outer Bearing Housing	4	7.0
10	9C-15	Inner Bearing Housing	4	8.0
11	9C-16	Bearing	8	1.7
12	8C-988	Notched Pulverizer Wheel		34.0
13	1D-927	Crowfoot Wheel		45.0
14	2D-213	Spacer, 2-3/16 Wide		3.0
	4D-108	Spacer, 2-1/16 Wide		2.8
15	1J-176	Long Axle Mount	2	5.9
16	1D-237	Capscrew, 1/2-13 NC x 2" long, Grade 5	4	
17	9D-726	Front Frame Tube	1	272.0
18	3J-32	Center Truss Assembly	1	420.0
19	1J-305	Manifold	1	
20	8C-65	Capscrew, 5/8-11 NC x 3" Long, Grade 5	2	
21	9D-194	L. H. Truss Assembly	1	301.5
	9D-195	R. H. Truss Assembly	1	301.5
22	2D-474	Capscrew, 5/8-11 NC x 1-3/4" Long, Grade 5	38	
	1B-166	Lockwasher, 5/8" Med.	52	
	1C-392	Hex Nut, 5/8-11 NC	52	
23	9D-612	Mounting Bracket	7	11.1
24	9D-190	Support Tube	1	126.5
25	5D-51	Capscrew, 1/2-13 NC x 1-3/4" Long, Grade 5	4	
26	9D-651	Support Arm	2	8.4
27	9D-629	L. H. Front Tooth Bar, 68-3/4" Long	1	38.0
	9D-628	R. H. Front Tooth Bar, 64-3/4" Long	1	36.0
28	9D-662	Spring Tooth	23	10.1
29	9D-667	Spring Tooth Clamp	23	
30	5C-78	Clamp Strap	23	.7
31	4D-386	Reversible Shovel (Can be used on worn 9D-662 spring tooth)		1.1
	2C-628	Plow Bolt, 3/8-16 NC x 1-1/2" Lg. R. H. Sq. Neck C. S.		
32	5J-180	Transport Axle Complete	1	345.8
	5J-181	Transport Axle W/O Hubs	1	321.0
33	6D-309	Bearing Cap	6	5.5
34	9D-653	Bearing Assembly	6	8.2
35	9C-59	Capscrew, 5/8-11 NC x 7" Long, Grade 5	12	
36	9D-602	Rear Tooth Bar	1	63.5
37	8D-312	Strap	4	
38	1J-530	U-Bolt, 1/2"	4	

(Continued on page 4)

WM-260 & WM-300 CENTER SECTION

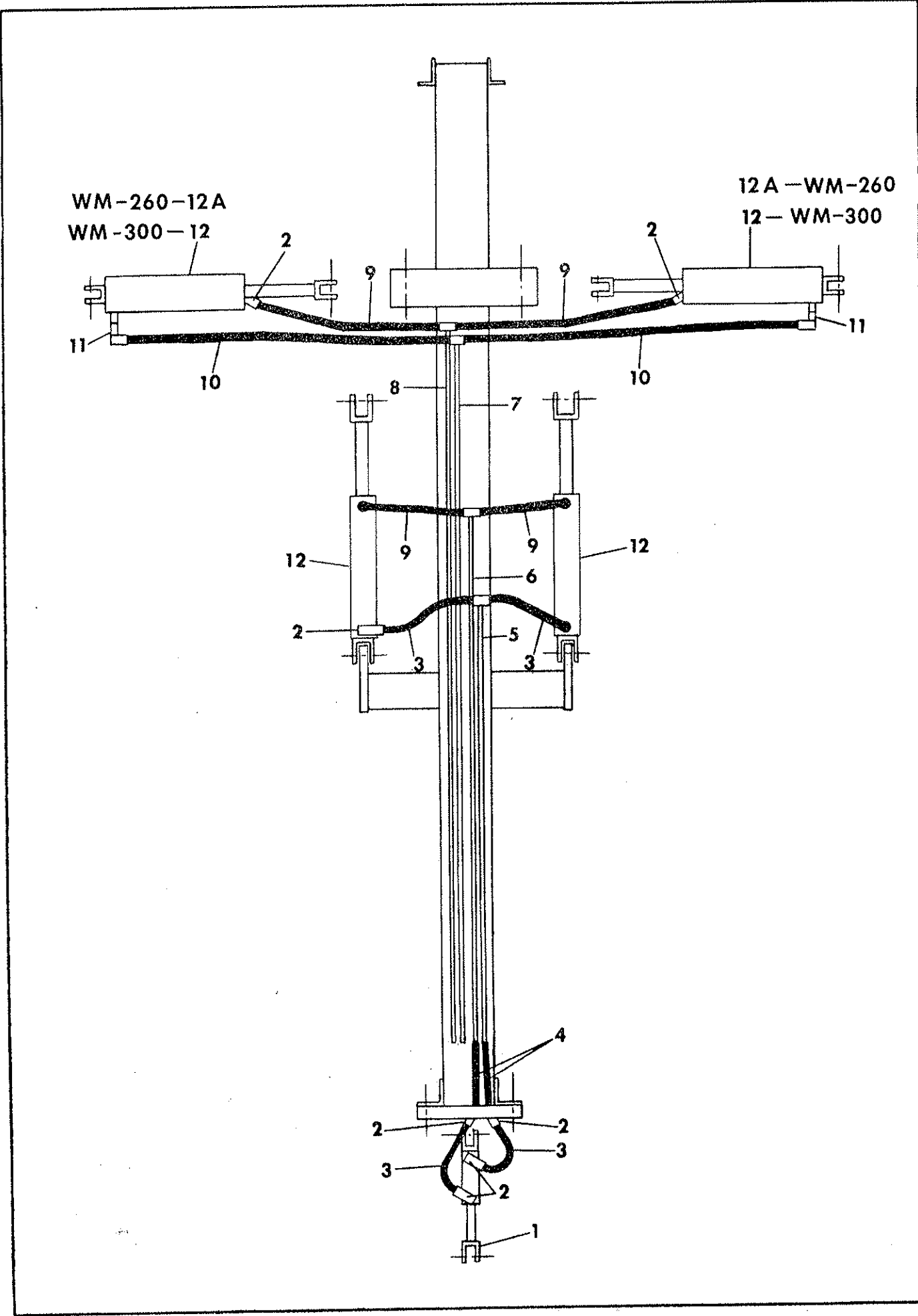
Index No.	Part No.	Description	No. Used	Weight
39	2J-978	Rear Frame Tube	1	255.0
	9D-868	Rear Center Bracket Assembly		
40	9D-585	Rear Center Bracket	1	20.0
41	9D-672	Short Axle Mount	2	4.3
42	7C-875	Capscrew, 1/2-13 NC x 2-1/2" Long, Grade 5	4	
43	7C-22	Bevel Washer	4	
44	6D-338	Seal, National #200335	4	.1
45	5C-480	Bearing Cone #LM48548	4	.2
46	5C-479	Bearing Cup #LM48510	4	.2
47	6D-336	Wheel Hub	4	10.5
48	5C-914	Bearing Cup #LM67010	4	.2
49	5C-913	Bearing Cone #LM67048	4	.2
50	6D-284	Slotted Nut, 1-14 NF	4	
	1C-871	Flat Washer	4	
51	6D-337	Hub Cap	4	.8
52	1C-788	Cotter Pin, 3/16 x 1-1/2" Long	4	
53	5C-100	Wheel Bolt	24	.1
54	9D-135	Wheel, 10-x 15, 6 bolt	4	
SCRAPERS				
1	9D-235	Rear Support	1	2.6
2	2D-474	Capscrew, 5/8-11 NC x 1-3/4" Long, Grade 5	2	
3	5D-309	Rear Scraper Bar	1	88.0
4	8C-527	Capscrew, 1/2-13 NC x 1-1/2" Long, Grade 5	1	
5	1C-234	Capscrew, 1/2-13 NC x 2" Long	4	
6	7C-22	Bevel Washer	4	
7	8C-904	Spacer	1	
	1C-109	Lockwasher, 1/2" Med.	5	
	1C-120	Flat Washer, 1/2" Std.	5	
	1C-390	Hex Nut, 1/2-13 NC	5	
8	2D-110	Scraper	37	1.0
	3D-627	Center Scraper	1	1.3
9	3C-734	Carriage Bolt, 3/8-16 NC x 1-1/2" Long	38	
	1C-182	Flat Washer, 3/8" Std.	38	
	1C-183	Lockwasher, 3/8" Med.	38	
	1C-277	Hex Nut, 3/8-16 NC	38	
10	9D-301	Tie Link	2	12.5
11	1D-445	Capscrew, 5/8-11 NC x 2-1/2" Long, Grade 5	4	
	1B-166	Lockwasher, 5/8" Med.	6	
	1C-392	Hex Nut, 5/8-11 NC	6	

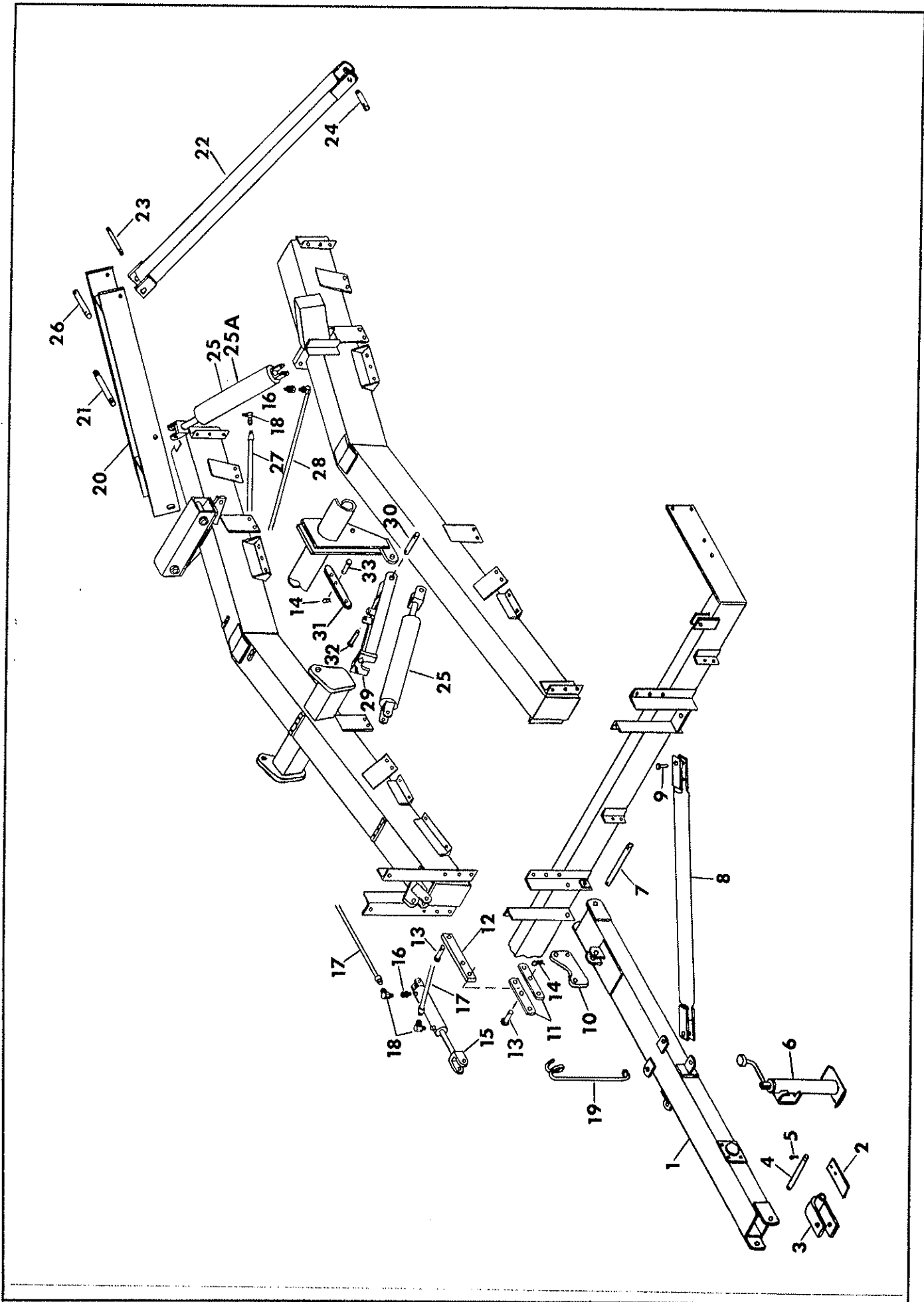




WING				
Index No.	Part No.	Description	No. Used	Weight
1	9D-666	Hinge Pin	4	2.0
	6C-406	Flat Washer, 1-1/4" SAE	8	
	6D-854	Roll Pin, 1/2 x 2" Long	8	
2	9D-676	Bushing, 11/16" Long	2	
	1C-133	Flat Washer, 3/4" Std.	2	
	3D-510	Capscrew, 3/4-10 NC x 2-1/2" Long, Grade 5	2	
	1C-211	Lockwasher, 3/4" Med.	2	
3	9D-665	Swivel	2	3.2
4	9D-625	Adjusting Sleeve	2	1.5
	5C-651	Flat Washer, 7/8" Std.	2	
	4C-864	Roll Pin, 3/8 x 1-3/4" Long	2	
5	9D-616	Control Rod	2	4.5
	1C-787	Flat Washer, 1" Std.	2	
	1C-869	Cotter Pin, 1/4 x 2" Long	2	
	7D-430	Jam Nut, 1-8 NC	2	
6	9D-661	Connecting Link	2	5.9
7	2D-473	Clevis Pin, 3/4 x 1-7/8" Long	4	
	3C-350	Cotter Pin, 5/32 x 1" Long	4	
8	9D-639	Hinge Tube, L.H.	1	126.2
	9D-640	Hinge Tube, R.H.	1	126.2
9	9D-657	L.H. Wing Scraper Bar - WM-260	1	37.7
	9D-737	L.H. Wing Scraper Bar - WM-300	1	48.0
	9D-658	R.H. Wing Scraper Bar - WM-260	1	37.7
	9D-738	R.H. Wing Scraper Bar - WM-300	1	48.0
10	1C-234	Capscrew, 1/2-13 NC x 2" Long	4	
11	7C-22	Bevel Washer	8	
12	1C-267	Capscrew, 1/2-13 NC x 1-1/2" Long	4	
	1C-120	Flat Washer, 1/2" Std.	8	
	1C-109	Lockwasher, 1/2" Med.	8	
	1C-390	Hex Nut, 1/2-13 NC	8	
			WM-300	
13	2D-110	Scraper	40	1.0
14	3C-734	Carriage Bolt, 3/8-16 NC x 1-1/2" Long	40	
	1C-182	Flat Washer, 3/8" Std.	40	
	1C-183	Lockwasher, 3/8" Med.	40	
	1C-277	Hex Nut, 3/8-16 NC	40	
15	9D-669	Straight Axle Mount	2	.9
16	9D-554	Drilled Bolt, 5/8-11 NC x 4" Long, Grade 5	2	
	1C-122	Flat Washer, 5/8" Std.	2	
	1B-166	Lockwasher, 5/8" Med.	2	
	4D-529	Slotted Nut, 5/8-11 NC	2	
	2C-864	Cotter Pin, 1/8 x 1" Long	2	
17	9D-150	L.H. Frame Tube - WM-260	1	86.0
	9D-742	L.H. Frame Tube - WM-300	1	110.0
	9D-151	R.H. Frame Tube - WM-260	1	86.0
	9D-743	R.H. Frame Tube - WM-300	1	110.0
18	8D-84	Capscrew, 5/8-11 NC x 4-1/2" Long, Grade 5	8	
19	9D-588	L.H. Channel - WM-260	1	104.1
	9D-745	L.H. Channel - WM-300	1	116.0
	9D-589	R.H. Channel - WM-260	1	104.1
	9D-746	R.H. Channel - WM-300	1	116.0
20	4J-82	Capscrew, 5/8-11 NC x 3-1/2" Long, Grade 5	4	
21	2D-474	Capscrew, 5/8-11 NC x 1-3/4" Long, Grade 5	12	
	1B-166	Lockwasher, 5/8" Med.	24	
	1C-392	Hex Nut, 5/8-11 NC	24	
		Continued on Page 8		

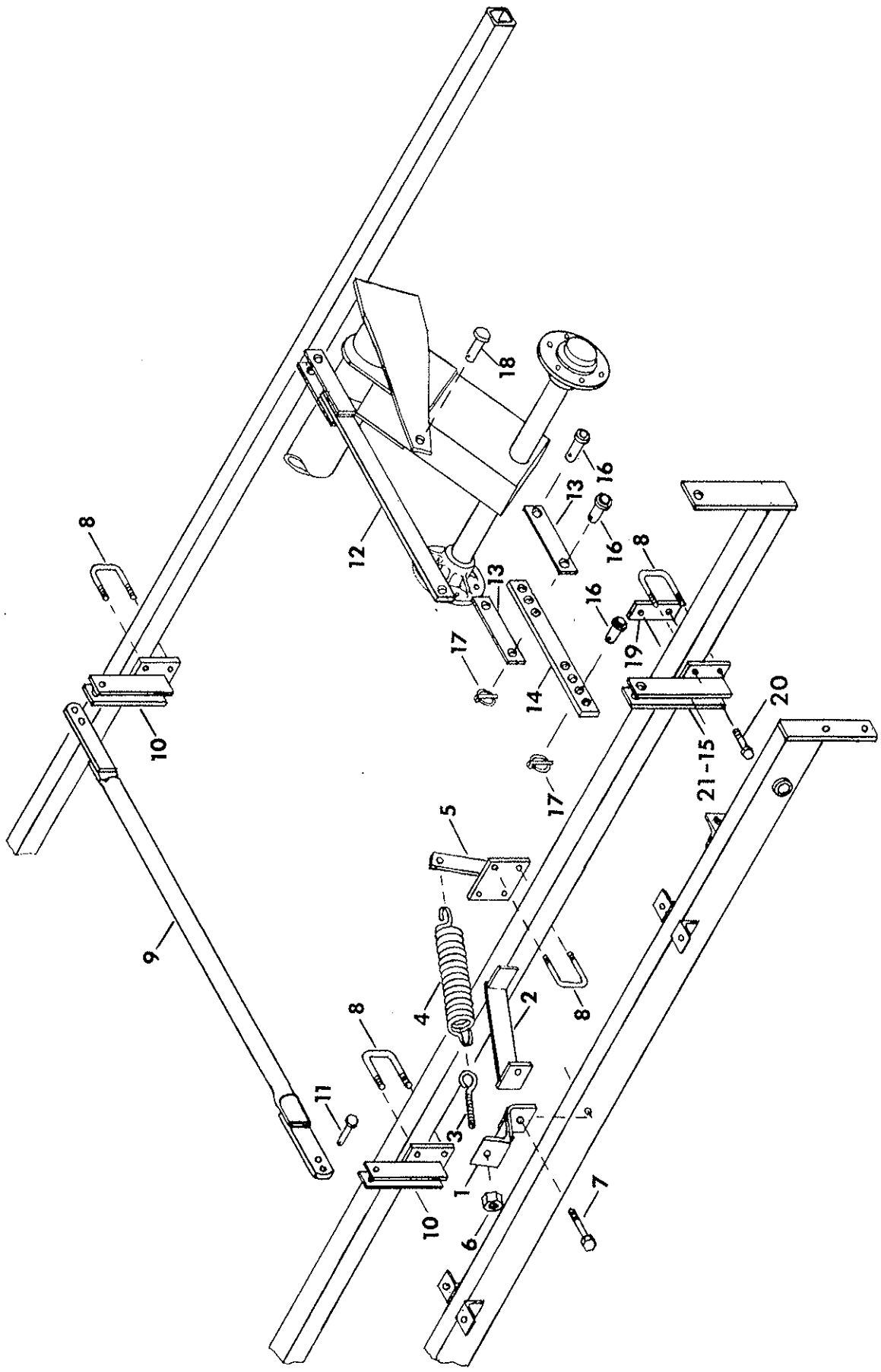
WING				
Index No.	Part No.	Description	No. Used	Weight
22	1J-176	Long Axle Mount	4	6.5
23	1D-237	Capscrew, 1/2-13 NC x 2" Long, Grade 5	8	
24	9D-672	Short Axle Mount	2	4.2
25	7C-875	Capscrew, 1/2-13 NC x 2-1/2" Long, Grade 5	4	
26	9D-631	Spring Tooth Shaft Bearing	4	1.8
27	8C-527	Capscrew, 1/2-13 NC x 1-1/2" Long, Grade 5	8	
28	9D-623	Rear Wing Tooth Bar - WM-260	2	32.0
	9D-734	Rear Wing Tooth Bar - WM-300	2	42.0
29	9D-618	Front Wing Tooth Bar - WM-260	2	35.0
	9D-733	Front Wing Tooth Bar - WM-300	2	45.0
		<u>WM-300</u>		
30	5C-78	Clamp Strap	24	18
31	9D-662	Spring Tooth	24	18
32	9D-667	Spring Tooth Clamp	24	18
33	4D-386	Reversible Shovel (Can be used on worn 9D-662 spring tooth)		1.1
	2C-628	Plow Bolt, 3/8-16 NC x 1-1/2" Long R. H. Sq. Neck C. S.		
34	9C-31	Axle Clamp	4	3.7
35	9D-673	U-Bolt, 1/2"	4	
	1C-109	Lockwasher, 1/2" Med.	64	
	1C-390	Nut, 1/2-13 NC Hex	64	
36	9D-114	Axle Pipe - 56-5/16 with Bearings - WM-260	4	63.6
	1J-180	Axle Pipe - 76-5/16 with bearings - WM-300	4	72.0
37	9C-14	Outer Bearing Housing	4	7.0
38	9C-15	Inner Bearing Housing	4	8.0
39	9C-16	Bearing	8	1.7
40	8C-988	Notched Pulverizer Wheel		34.0
41	1D-927	Crowfoot Wheel		45.0
42	2D-213	Spacer, 2-3/16 Wide		3.0
HYDRAULICS				
1	9D-282	Hydraulic Cylinder 2 x 6	1	21.0
2	1J-131	90° Swivel Fitting	7	
3	1J-307	Hydraulic Hose 16"	4	
4	1J-306	Hydraulic Hose 12"	2	
5	1J-309	Hydraulic Tube #1	1	
6	1J-310	Hydraulic Tube #2	1	
7	1J-311	Hydraulic Tube #3	1	
8	1J-312	Hydraulic Tube #4	1	
9	1J-308	Hydraulic Hose 30"	4	
10	2D-448	Hydraulic Hose 48"	2	
11	6D-716	Flow Restrictor	3	.3
12	9D-524	Hydraulic Cylinder - 3-1/2 x 16 WM-260	2	33.0
	9D-731	Hydraulic Cylinder - 4 x 16 WM-300	4	48.0
12A	5J-835	Hydraulic Cylinder - 3-1/2 x 16 WM-260 w/side ports	2	33.0
*	9D-303	Hydraulic Hose 138" - Tractor	4	12.6
*	9D-283	Hose Clamp	8	.1
*	1C-361	Capscrew, 5/16-18 NC x 1" Long	6	
*	3C-127	Flat Washer, 5/16 Std.	7	
*	1C-362	Lockwasher, 5/16" Med.	1	
*	9C-391	Capscrew, 5/16 - 18 NC x 3" Long	1	
*	1C-385	Nut, 5/16-18 NC Hex	1	
		* Not Shown		





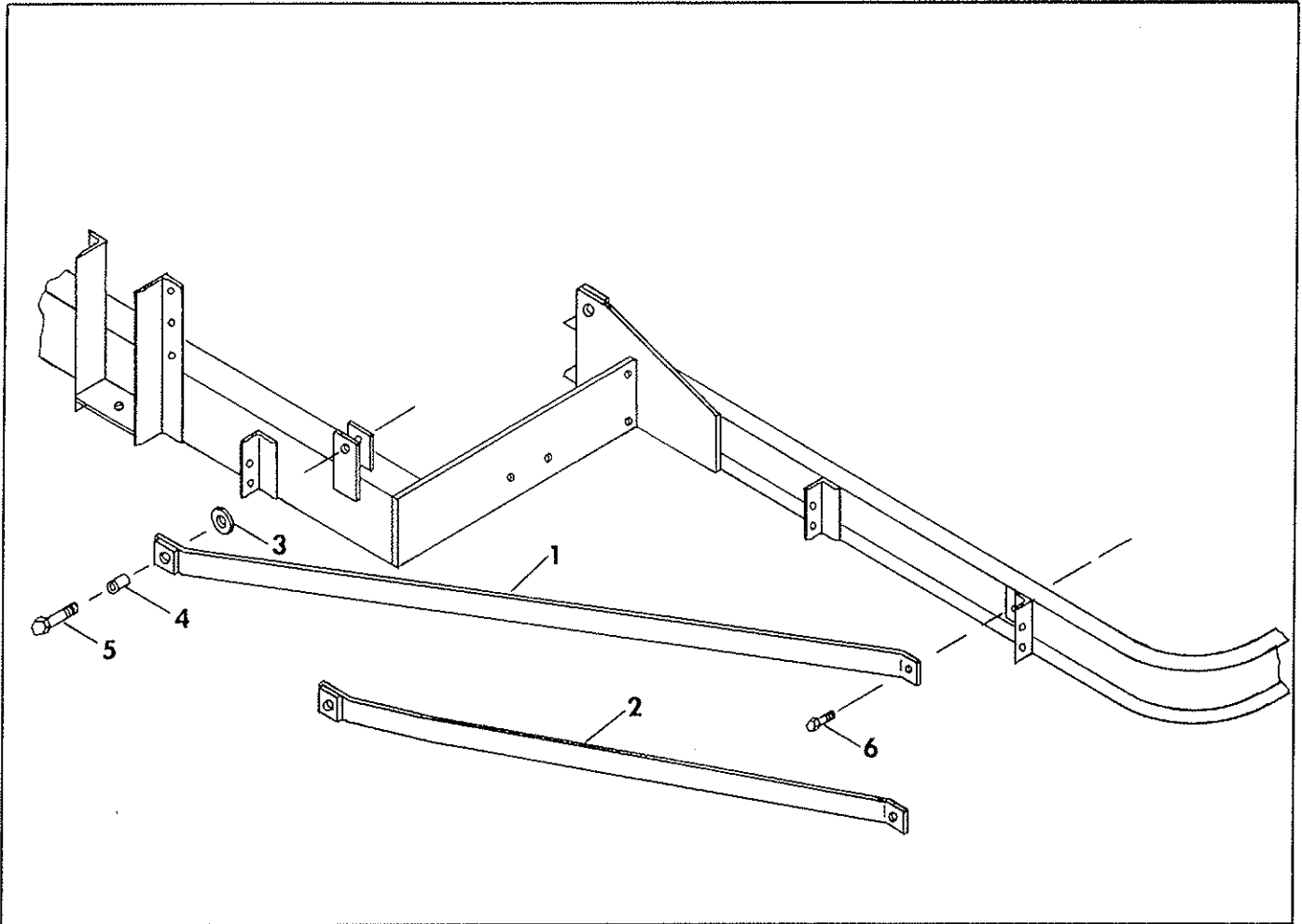
HITCH, WING LIFT, CYLINDER LOCK

Index No.	Part No.	Description	No. Used	Weight
1	9D-131	Hitch Assembly	1	127.5
2	6D-865	Flat Spring	1	.2
	5C-865	Capscrew, 3/8-16 NC x 3/4" Long	2	
	1C-182	Flat Washer, 3/8" Std.	2	
	5C-954	Locknut, 3/8-16 NC, Stover	2	
3	9D-227	Clevis	1	15.0
4	9D-293	Clevis pin, 1" x 8-1/4" Long	1	
5	1C-788	Cotter Pin, 3/16 x 1-1/2" Long	20	
6	9D-675	Jack	1	20.0
	8D-390	Retaining Ring	1	
7	9D-322	Hitch Pin, 1" x 10" Long	1	2.2
8	9D-127	Hitch Brace	2	15.2
9	2D-473	Clevis Pin, 3/4 x 1-7/8" Long	4	
	3C-350	Cotter Pin, 5/32 x 1" Long	8	
10	9D-664	Float Link	1	9.5
11	9D-377	Side Plate	2	2.5
12	9D-376	Tie Bar	1	5.8
13	8D-99	Clevis Pin, 1" x 2-1/2	5	
14	4C-856	Hairpin Cotter	3	
15	9D-282	Hydraulic Cylinder, 2 x 6	1	21.0
16	6D-716	Flow Restrictor	3	.3
17	1J-307	Hydraulic Hose 16"	2	
18	1J-131	90° Swivel Fitting	1	
19	6D-333	Hose Support	2	1.8
	5C-460	Capscrew, 5/8-11 NC x 2" Long, Grade 5	2	
	5C-907	Flat Washer, 5/8" Std.	2	
	1B-166	Lockwasher, 5/8" Med.	2	
	5C-461	Nut, 5/8-11 NC, Hex Stover	2	
20	9D-183	Wing Raising Arm - WM-260	2	98.4
	9D-729	Wing Raising Arm - WM-300	2	98.4
21	9D-670	Pivot Shaft	2	1.8
	1C-787	Flat Washer, 1" Std.	4	
	6D-306	Locknut, 1-8 NC Hex Stover	4	
22	9D-187	Wing Raising Link	2	43.2
23	9D-295	Pin, 3/4" Dia. x 6-1/4" Long	2	1.3
24	9D-294	Clevis Pin, 1" Dia. x 4" Long	2	.8
25	9D-524	Hydraulic Cylinder, 3-1/2 x 16 - WM-260	2	33.0
	9D-731	Hydraulic Cylinder, 4 x 16 - WM-300	4	48.0
25A	5J-835	Hydraulic Cylinder, 3-1/2 x 16 - WM-260 w/side ports	2	33.0
26	9D-296	Pin, 1" Dia. x 6-1/4" Long	2	1.3
27	1J-308	Hydraulic Hose 30"	2	
28	2D-448	Hydraulic Hose 48"	2	
29	2J-991	Cylinder Lock - WM-300	2	
	5J-832	Cylinder Lock - WM-260 used with 9D-524 Brillion Tie Rod Cylinder		
30	2J-525	Pin, 1" Dia. x 4-5/8" Long	2	1.12
	6C-468	Cotter Pin, 3/16 x 2" Long	4	
31	2J-996	Strap	2	1.5
32	3C-335	Clevis Pin, 1/2" Dia. x 3" Long	2	.1
	9C-134	Flat Washer, 1/2" Std.	2	
	2C-864	Cotter Pin, 3/16 x 1" Long	2	
33	2J-997	Clevis Pin, 3/4" Dia. x 2-3/4" Long	2	.3



TOOTH DEPTH CONTROL

Index No.	Part No.	Description	No. Used	Weigh
1	2J-934	Bracket	2	4.03
2	2J-931	Stop	2	4.09
3	2J-940	Eye Bolt	2	.45
4	2J-939	Extension Spring	2	5.0
5	2J-928	Lug Assembly	2	4.5
6	5C-392	Locknut, 1/2-13 NC Hex	2	
7	5D-871	Capscrew, 1/2-13 NC x 3-1/2" Long, Grade 5	2	.3
	1C-109	Lockwasher, 1/2" Std.	22	
	1C-390	Nut, 1/2-13 NC Hex	22	
8	1J-530	U-Bolt, 1/2"	14	.8
9	2J-926	Link	2	17.6
10	9D-635	Rear Tooth Control Arm	4	6.8
11	4D-198	Clevis Pin 3/4" Dia. x 2-3/4" Long	4	.35
	2C-458	Flat Washer 3/4" SAE	4	
	1C-986	Cotter Pin 1/8 x 1-1/2" Long	4	
12	2J-936	Control Link	2	13.3
13	2J-938	Side Strap	4	1.7
14	2J-937	Adjusting Link	2	5.8
15	9D-633	Front Tooth Control Arm (Obsolete - Use (1) 4J-702 or (1) 4J-703	2	7.7
16	2J-949	Clevis Pin, 1" Dia. x 2" Long	6	.45
17	5D-110	Klik Pin, 1/4"	4	.1
18	5D-12	Clevis Pin, 1" Dia. x 2-1/4" Long	2	
	4C-446	Cotter Pin, 1/4 x 1-1/2" Long	4	
19	8D-312	Strap	2	
20	3D-751	Capscrew, 1/2-13 NC x 4-1/2 Long, Grade 5	4	
21	4J-702	Front Tooth Control Arm, L.H. SHOWN	1	
*	4J-703	Front Tooth Control Arm, R.H. OPPOSITE	1	



WING BRACES

Index No.	Part No.	Description	No. Used	Weight
1	9D-755	Brace - WM-300	2	15.0
2	2J-985	L.H. Brace - WM-260	1	12.0
	2J-986	R.H. Brace - WM-260	1	12.0
3	4C-488	Flat Washer, 7/8 SAE	2	
4	4D-778	Bushing	2	.9
5	7C-875	Capscrew, 1/2-13 NC x 2 1/2, Grade 5	2	
6	8C-527	Capscrew, 1/2-13 NC x 1 1/2, Grade 5	2	
	1C-109	Lockwasher, 1/2 Med.	4	
	1C-390	Nut, 1/2-13 NC Hex	4	

CYLINDER IDENTIFICATION

1. Determine style of cylinder. Welded construction or tie rod construction. Tie rod construction has four long bolts running the length of the cylinder to hold the cylinder together. Welded construction has base welded to the tube.
2. Determine size of cylinder - completely retract cylinder measure distance from center of one attaching pin to other attaching pin. Measure outside diameter of tube and subtract $3/8''$ or $1/2''$ to get even dimension. The cylinder diameter is in even sizes - $3''$, $3-1/2''$, $4''$. So a tube that measures $3-7/8''$ O.D. is a $3-1/2''$ cylinder. Series cylinders are an exception, and are usually sized in $1/4''$ increments such as $5''$, $4-3/4''$, $4-1/2''$, etc.
3. Measure rod size.
4. Look in index of this book to find machine used and location of cylinder on machine. Turn to the particular cylinder and find cylinder type. Check cylinder size, retracted length and rod size. When all these items check, the cylinder is identified.

Study cylinder construction, these drawings reflect as accurately as possible the actual construction of the cylinder.

HYDRAULIC CYLINDER USAGE INDEX

		<u>Page No.</u>
6D-138	Wing Raising on STS & STR Harrows	3
6D-724	Wing Raising on HSD-360 Harrow	
	Machine Raising WP-108, WPW-128 Pulverizer	4
9D-137	Folding Toolbar BRSF & BSFF Ro-Crop Cultivator	
	Folding Toolbar BRCF-6402, BRCF-8302, BRCF-8402	
	Wing Raising on Soil Builder (15 & 17 Shank)	
	Folding Toolbar BCFF Ro-Crop Cultivator	
	Machine Raising X-108 Pulverizer	5
9D-282	Hitch Cylinder WM-2601 & 3001, WM-2602 & 3002	
	Machine Raising Kit on SST-961, SST-1201 & SSLFT-120	6
9D-327	Folding Toolbar BRSF-12302 Ro-Crop Cultivator	7
9D-524	Wing Raising WM-2601	
	Machine Raising WM-2601 Beginning 8/1/76, WM-3002	
	Machine Raising on ML Mulcher	
	Wing Raising WP-108, WPW-128 Pulverizer	
	Machine Raising XL-144 Pulverizers	
	Wing Raising (SG-24 to SG-30) Soil Groomer	8-9
9D-731	Wing Raising WM-3001, WM-3002 Mulcher	
	Machine Raising WM-3001, Beginning 8/1/76, WM-3002	
	Machine Raising WM-360	10
9D-762	SST-144 Seeder	11
2J-674	Machine Raising on Soil Builder (5-11 Shank)	12-13
3J-567	Hitch Cylinder WM-360	14
3J-568	Wing Raising WM-360	15
3J-603	Tooth Depth Control WM-360	16
	Machine Raising on Flail Shredder	
3J-815	Machine Raising on FCF Field Cultivator	17-18
3J-816	Machine Raising on FCF Field Cultivator	19-20
3J-817	Machine Raising on FCF Field Cultivator	21-22
3J-818	Wing Raising on FCF Field Cultivator	23
4J-657	Wing Raising on Cultivator-Incorporator	24
4J-658	Machine Raising on Cultivator-Incorporator	
	Machine Raising on (SG-24 to SG-30) Soil Groomer	25
4J-659	Machine Raising on Cultivator-Incorporator	
	Machine Raising on (SG-24 to SG-30) Soil Groomer	26
4J-660	Machine Raising on Cultivator-Incorporator	
	Machine Raising on (SG-24 to SG-30) Soil Groomer	27
4J-661	Machine Raising on Cultivator-Incorporator	
	Machine Raising on (SG-12 to SG-30 & SGH-24) Soil Groomer(Except SG-24)	28
5J-128	Machine Raising on Soil Builder (13, 15 & 17 Shank)	29
5J-280	Machine Raising on TPW Pulverizers	30-31
	Hydraulic Coulter Depth Control Option for Soil Builder (7-11 Shank)	
5J-830	Wing Raising on (XLW-120 & XLW-144) Pulverizer	32
5J-835	Same as 9D-524 BIW with Side Ports	
	Folding Tool Bar BCFF-1230 Ro-Crop Cultivator	
	Wing Raising WM-2602 Mulcher	
	Wing Raising (SG-18 to SG-21) Soil Groomer	8-9
6J-011	Machine Raising on (SG-12 to SG-21) Soil Groomer	33
6J-012	Machine Raising on (SG-12 to SG-30 & SGH-24) Soil Grm.	34
6J-216	Wing Raising on (XLW-84 to XLW-108) Pulverizer	35

HYDRAULIC CYLINDER USAGE INDEX
(continued)

Page No.

6J-811	Wing Raising on (XW-84 to XW-108) Pulverizer Wings	36
6J-812	Wing Raising on (XW-60 & XW-72) Pulverizer Wings	37
7J-194	Machine Raising on (SGH-18 & SGH-21) Soil Groomer	38
7J-195	Machine Raising on (SGH-18 & SGH-21) Soil Groomer	39
7J-680	Machine Raising on Extended Frame Soil Builders	40-40A
8J-782	Machine Raising on (SG-121 to SG-211) Soil Groomers, after 1-25-88	41
8J-783	Machine Raising on (SG-121 to SG-301 & SGH-241) Soil Groomers, after 1-25-88	42
8J-784	Machine Raising on (SG-121 to SG-301 & SGH-241, except SG-241) Soil Groomers, after 1-25-88	43
	Machine Raising, Cultivator-Incorporator after 1-25-88.	
8J-808	Machine Raising on (SG-241 to SG-301) Soil Groomers after 05/26/88	44
8J-874	Machine Raising on (SG-241 to SG-301) Soil Groomers, after 05/26/88	45
8J-875	Machine Raising on (SG-241 to SG-301) Soil Groomers, after 05/26/88	46
9J-440	Machine Raising on SS-10 Seeder	47
9J-480	Machine Raising on (SGH-18 & SGH-21) Soil Groomer	48
9J-481	Machine Raising on (SGH-18 & SGH-21) Soil Groomer	49
9J-482	Machine Raising on (SG-121 to SG-211) Soil Groomers, after 11/89	50
9J-483	Machine Raising on (SG-121 to SG-301 & SGH-241) Soil Groomers, after 11/89	51
9J-484	Machine Raising on (SG-121 to SG-301 & SGH-241, except SG-241) Soil Groomers, after 11/89	52
	Machine Raising, Cultivator-Incorporator after 11/89	
9J-485	Machine Raising on (SG-241 to SG-301) Soil Groomers after 11/89	53
9J-486	Machine Raising on (SG-241 to SG-301) Soil Groomers, after 11/89	54
9J-487	Machine Raising on (SG-241 to SG-301) Soil Groomers, after 11/89	55

<u>Code Letter</u>	<u>Manufacturer</u>
BIW	Brillion Iron Works
G	Hydraulic Gear
L	Lantex
P	Prince

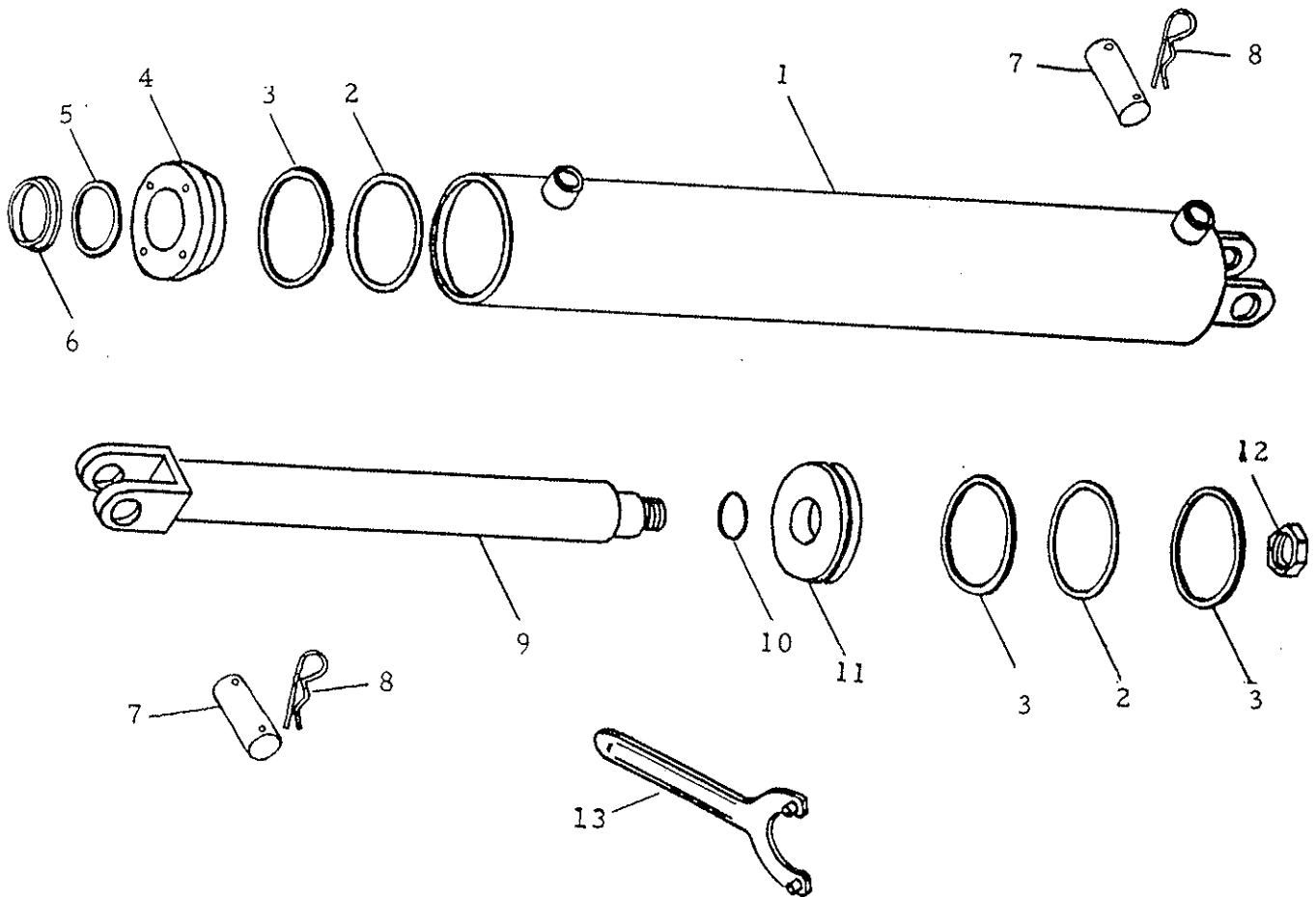
9D-282 G Hydraulic Cylinder 2 x 6

Hydraulic Gear #2006-01 Painted Red

1" Dia. Rod, 16-1/4 Retracted, 22-1/4 Extended Length

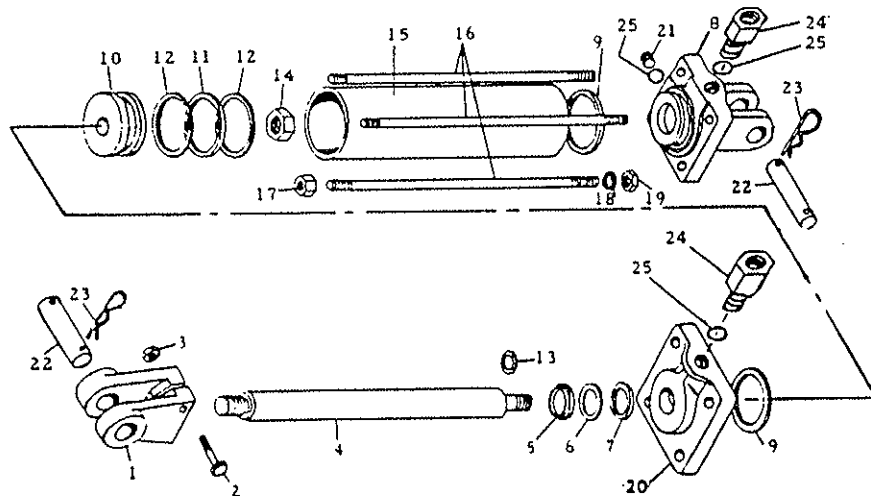
Item	Part No.	Description	Qty
1	3J-569	Tube Assembly	1
*2	NSS	O Ring	2
*3	NSS	Back-Up Ring	3
4	3J-571	Packing Gland	1
*5	NSS	Rod Seal & Back-Up Rings	1
*6	NSS	Wiper	1
7	5J-650	Cylinder Pin	2
8	4C-856	Hairpin Cotter	4
9	3J-570	Rod Assembly	1
*10	NSS	Seal	1
11	3J-572	Piston	1
12	6D-918	Hex Nut 3/4-16 Lock	1
*	3J-573	Seal Kit (Items Marked "*")	
13	5J-131	Spanner Wrench (Disassembly Tool)	

NSS - Not Serviced Separately



9D-524 BIW Hydraulic Cylinder 3-1/2 x 16
 Painted Green
 1-3/8 Rod Dia., 26-1/4 Retracted, 42-1/4 Extended Length
 5J-835 - Same except assembled with side ports.

Item	Part No.	Description	Qty.
1	5J-195	Rod End Clevis	1
2	9D-797	Capscrew 5/16-18 NC x 2-1/4 Long	1
3	1C-385	Hex Nut 5/16-18 NC	1
4	5J-236	Rod	1
*5	5J-233	Rod Wiper	1
*6	5J-229	Back-Up Washer	1
*7	5J-228	"O" Ring Rod Packing	1
8	7J-29	Base (With Ports Requiring "O" Ring Fittings)	1
	5J-197	Base (Part No. on Casting With Pipe Thread) When this number is ordered you will receive (1) 7J-29, (2) 7J-24, (1) 7J-25 and (1) 7J-26	1
*9	5J-230	"O" Ring	2
10	5J-196	Piston	1
*11	5J-231	"O" Ring - Piston	1
*12	5J-232	Back-Up Washer	2
*13	5J-227	"O" Ring	1
14	6D-918	Piston Nut 3/4-16 NF Stover	1
15	5J-235	Tube	1
16	5J-226	Tie Rod	4
17	5C-392	Nut 1/2-13 NC Stover	4
18	1C-109	Lockwasher 1/2	4
19	1C-390	Hex Nut 1/2-13 NC	4
20	7J-28	Gland (With Port Requiring "O" Ring Fitting)	1
	5J-198	Gland (Part No. on Casting With Pipe Thread) When this number is ordered you will receive (1) 7J-28, (1) 7J-24 and (1) 7J-26	1
21	7J-25	Plug, "O" Ring Tupe (Without "O" Ring)	1
	5J-234	Plug, Pipe Thread (Used Prior to 8/83)	1
22	5J-650	Clevis Pin	2
23	1D-594	Hairpin Cotter	4
24	7J-26	Adaptor (Without "O" Ring)	2
25	7J-24	"O" Ring (Not a Part of 7J-25 & 7J-26)	3
*	5J-844	Seal Kit (Items Marked "**")	1



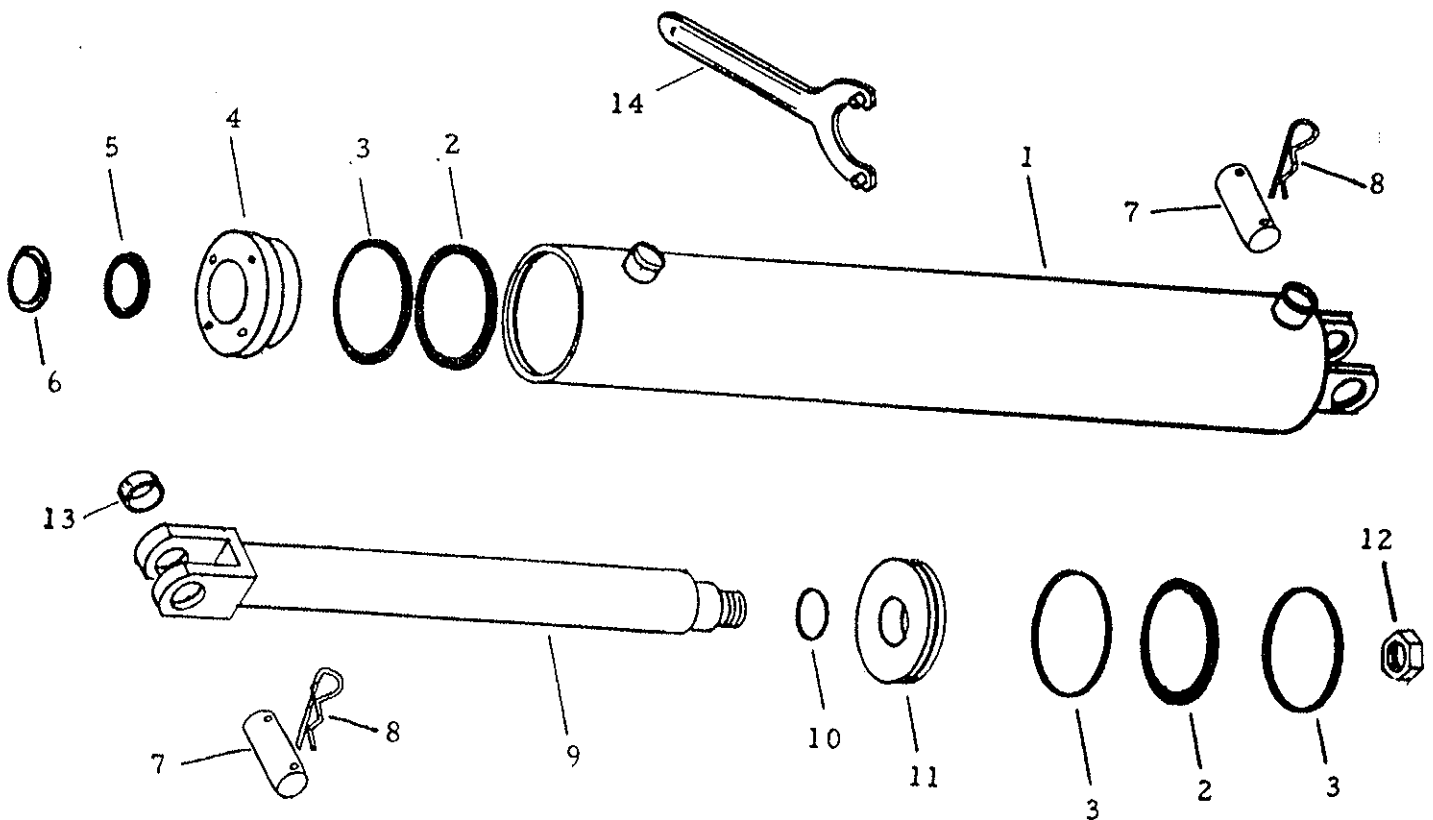
9D524 G Hydraulic Cylinder 3-1/2 x 16

Hydraulic Gear #3516-01 Painted Green

1-3/8 Dia. Rod , 26-1/4 Retracted, 42-1/4 Extended Length

<u>Item</u>	<u>Part No.</u>	<u>Description</u>	<u>Qty.</u>
1	1J-957	Tube Assembly	1
*2	NSS	O Ring	2
*3	NSS	Back-Up Ring	3
4	1J-958	Gland	1
*5	NSS	Rod Seal & Back Up Rings	1
*6	NSS	Wiper	1
7	5J-650	Cylinder Pin	2
8	4C-856	Pin Clip	4
9	1J-960	Rod Assembly	1
*10	NSS	O Ring	1
11	1J-959	Piston	1
12	6C-750	Hex Nut 7/8-14 NF Lock	1
13	8J-918	Tension Bushing	2
*	1J-961	Seal Kit (Items marked "**")	
14	5J-133	Spanner Wrench (Disassembly Tool)	

NSS = Not Serviced Separately



9D731 G Hydraulic Cylinder 4 x 16

Hydraulic Gear #4016-01 Painted Green

1-3/4 Dia. Rod, 26-1/4 Retracted, 42-1/4 Extended Length

Item	Part No.	Description	Qty.
1	1J-952	Tube Assembly	1
*2	NSS	O Ring	2
*3	NSS	Back-Up Ring	3
4	1J-953	Gland	1
*5	NSS	Rod Seal & Back-Up Rings	1
*6	NSS	Wiper	1
7	5J-650	Cylinder Pin	2
8	4C-856	Hairpin Cotter	4
9	1J-954	Rod Assembly	1
*10	NSS	O-Ring	1
11	1J-955	Piston	1
12	1J-951	Hex Nut 1-1/4 - 12 NF Lock	1
*	1J-956	Seal Kit (Items Marked "**")	
13	5J-134	Spanner Wrench (Disassembly Tool)	

NSS - Not Serviced Separately

